



Cotton This Month

03 August 2020

Changes in Supply and Demand Estimates (from 15 July 2020)

Major changes (larger than 40,000 tons):

India 2019/20: consumption 4.6 million tonnes (+ 270,000 tonnes)
 2020/21: production 6.2 million tonnes (+ 465,000 tonnes)
 2020/21: consumption 4.75 million tonnes (+ 344,200 tonnes)
 2020/21: exports 1.1 million tonnes (+ 98,000 tonnes)

Turkey 2019/20: consumption 1.48 million tonnes (+ 62,200 tonnes)
 2020/21: imports 859,000 tonnes (+ 97,900 tonnes)
 2020/21: consumption 1.5 million tonnes (+ 63,400 tonnes)

World Cotton Supply and Demand

	2018/19		2019/20		2020/21	
	million tonnes	change	million tonnes	change	million tonnes	change
Beginning Stocks	18.82	0.00	18.76	0.00	21.96	-0.33
Production	25.72	0.00	26.15	0.00	24.77	0.43
Supply	44.53	0.00	44.91	0.00	46.73	0.10
Consumption	26.01	0.00	22.95	0.33	23.85	0.41
Exports	9.04	0.00	8.65	0.00	9.07	0.10
Ending Stocks	18.76	0.00	21.96	-0.33	22.88	-0.31

ICAC Price Projections

Season-average Cotlook A Index (US cents per pound).

Projections	Previous Month		This Month	
	Range	Midpoint	Range	Midpoint
2020/21*	46-74	58	48-77	63

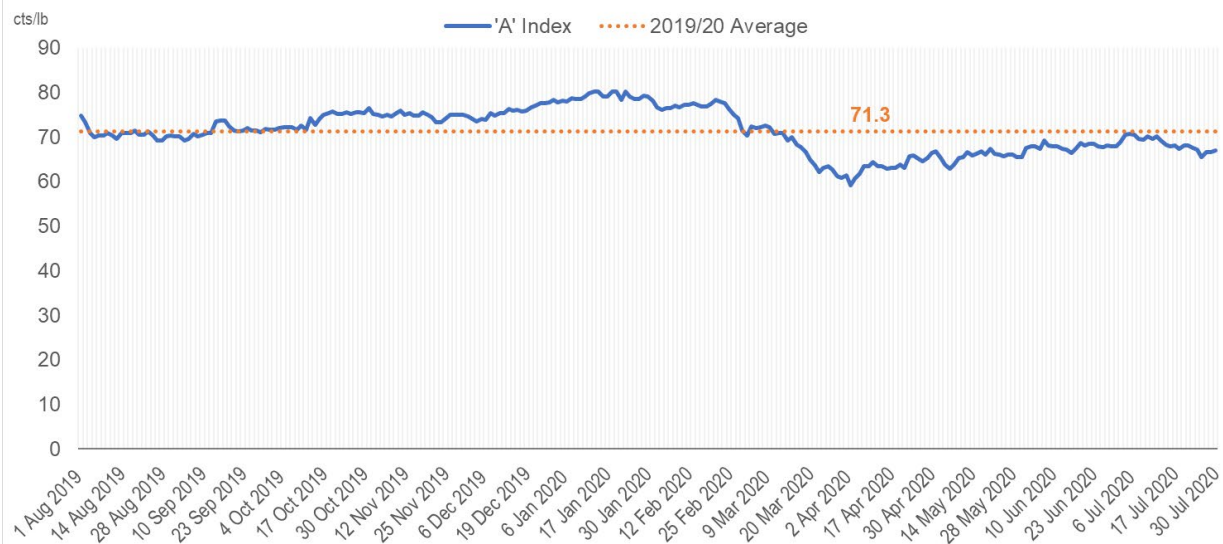
* The price projection for 2020/21 is based on the ending stocks-to-mill use ratio in the world-less-China in 2018/19 (estimate), in 2019/20 (projection) and in 2020/21 (projection), on the ratio of Chinese net imports to world imports in 2019/20 (projection) and 2020/21 (projection), and the price projection for 2019/20. The projection reflects a 95% confidence interval.



Lower World Cotton Prices Expected in 2020/21

Following a high in January 2020, international cotton prices fell through February and March. The 2019/20 Cotlook A index reached a season low in April. The season average of 71.3 cents/pound represents the third consecutive season of declining cotton prices. The global pandemic slowed demand sharply in March and April. Despite low prices, due to low demand, cotton spinners, textile and apparel manufacturers reduced activity with few orders to fulfil. Cotton consumption for the 2019/20 season is estimated to have fallen 12% to 23 million tonnes.

Without Demand Global Prices Have Fallen in 2019/20



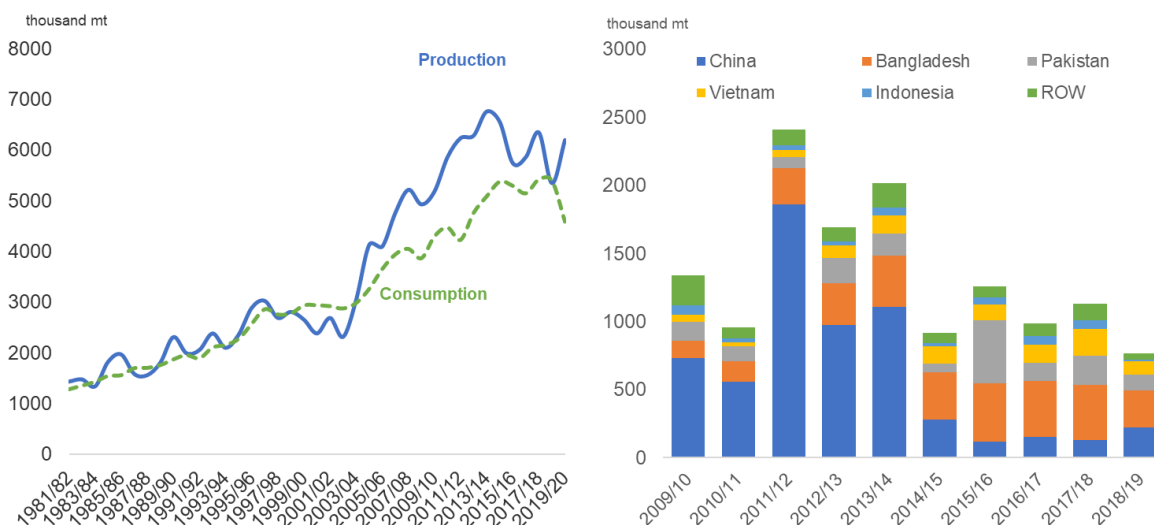
Cotton consumption is expected to recover in 2020/21 if projected global economic growth materialises as economic activity and consumer demand increases, benefitting from lower cotton prices, but facing continual competition from synthetic fibres. Cotton consumption for 2020/21 is forecast at 23.9 million tonnes, a 5% increase from the previous season. Cotton production for 2020/21 is projected at 24.8 million tonnes, a 5% decrease from the previous season due to a global area decrease of 2 million hectares. While global stocks are expected to remain high at 22 million tonnes, with an anticipated decrease in production and increase in consumption, the pressure on global stocks has been reduced from last month's estimate, and the stocks-to-use ratio would decrease to 0.96 for the 2020/21 season.

While production in India is expected to be strong in 2020/21 from the timely planting and abundant moisture, production in China is expected to be smaller based on reduced area. The US crop, while

initially expected to exceed the 2019/20 production, has now been projected lower based on drought conditions in West Texas. Area in Mexico has been reduced by 35% with a projected 88,000 tonne decrease in production. Exports from West Africa have been severely impacted by the reduced demand and production is expected to decrease as farmers may be discouraged and will need to move to food crops. The health induced economic crisis is likely to impact area decreases in Egypt as cotton farmers move toward food crops as currency related inflation costs increase the costs of production. High input costs are also affecting decisions in Turkey as area is expected to reduce by 12% to 400,000 hectares.

The sharp decrease in global consumption coinciding with global increases in production have put pressure on prices in 2019/20. Low cotton prices and excess supply with little demand have decreased export opportunities for major exporters. Along with West Africa, Indian exports have seen a decline from the previous season with a reduction in trade from all typical export destinations. However, unlike West Africa countries, India benefits from closer distance to major manufacturing markets as well as a strong domestic textile industry that has rebounded following earlier lockdown measures from the health crisis.

Consumption and Export Situation in India Mirrors Global Contraction



Prices

The price projection for the year-end 2020/21 average of the A Index is 62.8 cents per pound this month.

Cotton This Month is published at the beginning of the month with the Cotton Update published mid-month. The Cotton Update is a mid-month report with updated information on supply/demand estimates and prices. The next **Cotton Update** will be released on **17 August 2020**. The next **Cotton This Month** will be released on **1 September 2020**.



Cotton Update

International Cotton Prices

	Today	Change	Season Low	Season High	1 Year ago	2 Years ago
Current Cotlook A Index	68.55	0.15	59.15	80.20	74.85	98.70
NY Futures Nearby Contract ^a	62.82	0.13	48.41	71.53	62.87	89.95
Basis ^b	5.73	0.02	4.91	12.32	11.98	8.75
2019/20 average to date	71.33					
2018/19 average	84.35					

^a Previous day's close.

^b Current A Index minus Nearby NY (previous close).

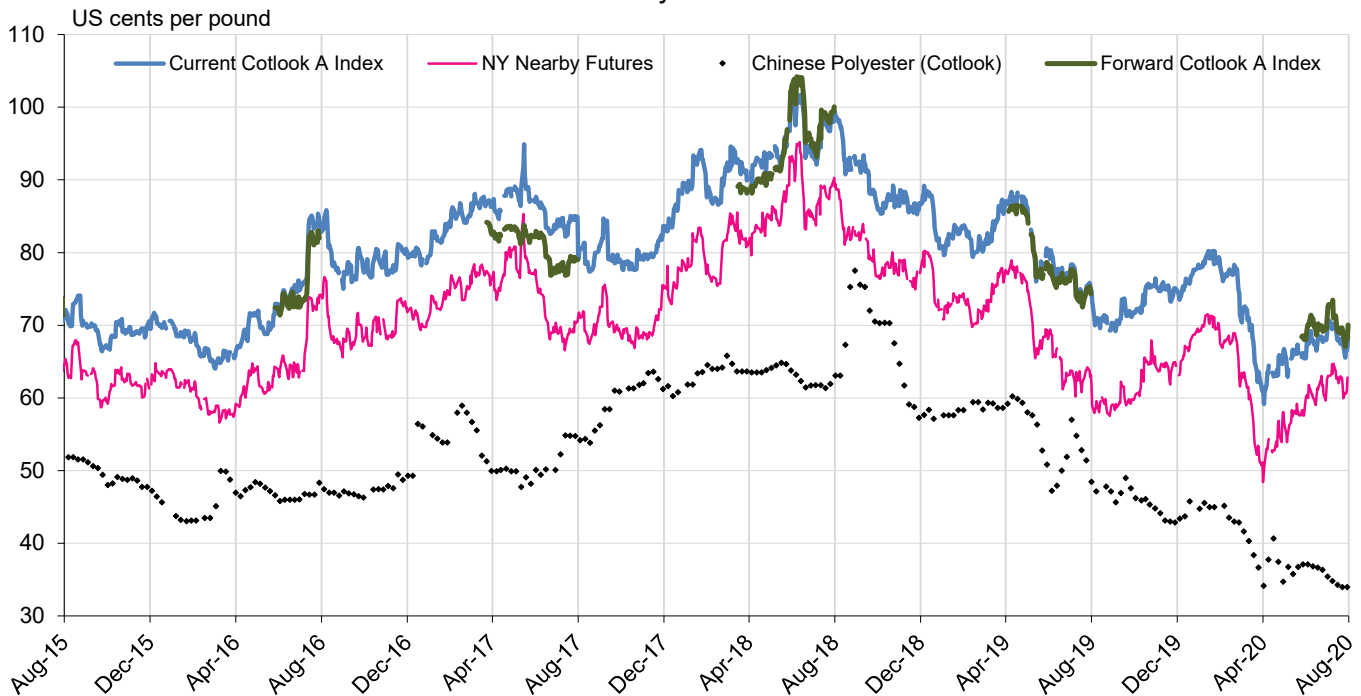
Source: Cotlook Ltd.; quotes in U.S. cents per pound.

China Domestic Cotton Prices

	Today	Change	Season Low	Season High	1 Year ago	2 Years ago
China Cotton Index (3128B)	80.0	1.20	70.9	92.5	92.7	107.8

Source: Beijing Cotton Outlook; mill-delivered prices; quotes in U.S. cents per pound (exchange rate from IMF).

Daily Prices



Published by the Secretariat of the International Cotton Advisory Committee,
1629 K Street NW, Suite 702, Washington, DC 20006. Copyright © ICAC 2020
Telephone: 202-463-6660; email: secretariat@icac.org.

No reproduction is permitted in whole or part without the express consent of the Secretariat.



**Cotton Update
Supply and Distribution of Cotton**

Seasons begin on August 1

	2015/16	2016/17	2017/18	2018/19 Est.	2019/20 Proj.	2020/21 Proj.
million metric tonnes						
Beginning stocks						
World Total	22.95	20.31	18.48	18.82	18.76	21.96
China	14.12	12.65	10.35	9.03	8.88	9.20
USA	0.79	0.83	0.60	0.94	1.08	1.57
Production						
World Total	21.48	23.08	26.71	25.72	26.15	24.77
India	5.75	5.87	6.35	5.35	6.20	6.20
China	5.20	4.90	5.89	6.04	5.80	5.68
USA	2.81	3.74	4.56	4.00	4.34	3.81
Pakistan	1.54	1.66	1.80	1.67	1.32	1.19
Brazil	1.29	1.53	2.01	2.78	2.89	2.45
Uzbekistan	0.83	0.79	0.80	0.64	0.64	0.64
Others	4.07	4.59	5.32	5.24	4.97	4.80
Consumption						
World Total	24.14	24.79	26.35	26.01	22.95	23.85
China	7.60	8.28	8.50	8.25	7.25	7.80
India	5.30	5.15	5.42	5.40	4.59	4.75
Pakistan	2.15	2.15	2.35	2.36	2.20	2.16
Europe and Turkey	1.68	1.61	1.64	1.70	1.62	1.64
Bangladesh	1.32	1.41	1.66	1.58	1.22	1.25
Vietnam	1.01	1.17	1.51	1.51	1.40	1.44
USA	0.75	0.71	0.77	0.64	0.54	0.61
Brazil	0.66	0.69	0.68	0.73	0.65	0.65
Others	3.67	3.64	3.82	3.84	3.49	3.55
Exports						
World Total	7.54	8.19	9.02	9.04	8.65	9.07
USA	1.99	3.25	3.45	3.21	3.31	3.27
India	1.26	0.99	1.13	0.76	0.53	1.13
CFA Zone	0.98	1.00	1.06	1.18	1.07	1.22
Brazil	0.94	0.61	0.91	1.31	1.90	1.48
Uzbekistan	0.50	0.40	0.34	0.13	0.06	0.06
Australia	0.62	0.81	0.85	0.79	0.24	0.27
Imports						
World Total	7.59	8.09	8.99	9.27	8.65	9.07
Bangladesh	1.38	1.41	1.67	1.54	1.22	1.23
Vietnam	1.00	1.20	1.52	1.51	1.40	1.44
China	0.96	1.10	1.32	2.10	1.81	1.90
Turkey	0.92	0.80	0.88	0.76	0.90	0.86
Indonesia	0.64	0.74	0.76	0.69	0.63	0.64
Trade Imbalance 1/	0.06	-0.10	-0.04	0.23	0.00	0.00
Stocks Adjustment 2/	-0.03	-0.01	0.00	0.00	0.00	0.00
Ending Stocks						
World Total	20.31	18.48	18.82	18.76	21.96	22.88
China	12.65	10.35	9.03	8.88	9.20	8.93
USA	0.83	0.60	0.94	1.08	1.57	1.50
Ending Stocks/Mill Use (%)						
World less China 3/	46	49	55	56	81	87
China 4/	166	125	106	108	127	114
Cotlook Index A 5/	70.39	82.77	87.98	84.35		

1/ The inclusion of linters and waste, changes in weight during transit, differences in reporting periods and measurement error account for differences between world imports and exports.

2/ Difference between calculated stocks and actual; amounts for forward seasons are anticipated.

3/ World-less-China's ending stocks divided by world-less-China's mill use, multiplied by 100.

4/ China's ending stocks divided by China's mill use, multiplied by 100.

5/ US cents per pound.



2018/19 Supply and Use of Cotton by Country 1 August 2020

	Area	Yield	Prod	Beg Stocks	Imports	Cons	Exports	End Stocks	S/U *	S/MU **
	000 Ha	Kgs/Ha	000 Metric Tonnes						Ratio	Ratio
Canada				0.05	0.35	0.35		0.04	0.12	0.12
Cuba	4	269	1	1	2	3		1	0.19	0.19
Dom. Rep.					1	1		0	0.47	0.47
Mexico	245	1,692	414	182	183	440	113	226	0.41	0.51
USA	4,130	968	3,999	936	1	644	3,214	1,078	0.28	1.67
N. America	4,384	1,007	4,415	1,120	187	1,090	3,328	1,305	0.30	1.20
El Salvador				9	35	35		9	0.26	0.26
Guatemala				7	27	27		7	0.26	0.26
Honduras	0.14	318	0.04	0.19		0.00		0.23		
C. America	1	522	1	16	62	63		16	0.26	0.26
Argentina	333	773	257	347	1	167	118	320	1.12	1.91
Bolivia	4	640	3	2	1	3	0.22	2	0.50	0.53
Brazil	1,618	1,717	2,779	1,598	4	730	1,310	2,340	1.15	3.21
Chile				0.02	0.05	0.05		0	0.41	0.41
Colombia	15	870	13	4	27	40		4	0.10	0.10
Ecuador	1	439	1	3	10	11		3	0.31	0.31
Paraguay	10	420	4	2	2	3	2	3	0.72	1.35
Peru	25	819	21	39	47	59	1	46	0.77	0.78
Uruguay				0.001	0.009	0.009		0.001	0.06	0.06
Venezuela	15	392	6	3	5	10		3	0.30	0.30
S. America	2,022	1,525	3,083	1,997	96	1,024	1,431	2,722	1.11	2.66
Algeria				0.06	1	1		0	0.05	0.05
Egypt	142	782	111	98	105	145	71	98	0.46	0.68
Morocco				3	7	7		3	0.38	0.38
Sudan	180	578	104	16		18	86	16	0.15	0.89
Tunisia				3	12	12		3	0.22	0.22
N. Africa	322	668	215	120	126	184	157	120	0.35	0.65
Benin	656	449	295	146		1	292	147	0.50	107.48
Burkina Faso	646	283	183	137		3	200	116	0.57	38.82
Cameroon	250	530	132	60		2	125	66	0.52	34.85
Cent. Afr. Rep.	32	251	8	0.32			4	4	0.93	
Chad	60	117	7	14		0.26	14	6	0.43	24.32
Cote D'Ivoire	392	514	202	56		2	195	61	0.31	29.77
Guinea	12	286	3	1			3	2	0.58	
Madagascar				3				3		
Mali	698	395	276	66		2	300	40	0.13	19.79
Niger	4	469	2	0.24		1	1	0	0.11	0.25
Senegal	22	285	6	1		1	5	1	0.18	1.41
Togo	180	313	56	19			47	28	0.59	
F. Africa	2,953	396	1,171	504		12	1,187	475	0.40	38.60
Angola	3	304	1	0.29		1	0.24	0.29	0.34	0.48
Ethiopia	78	737	57	19	6	52	7	22	0.37	0.42
Ghana	15	373	5	12		1	4	12	2.22	9.28
Kenya	13	149	2	2	1	3	0.06	1	0.33	0.34
Malawi	86	248	21	3		3	9	12	0.99	3.99
Mozambique	140	151	21	15		1	20	15	0.69	
Nigeria	250	205	51	22	1	28	29	17	0.31	0.63
South Africa	42	1,142	48	39	15	19	31	51	1.03	2.71
Tanzania	420	193	81	23		44	43	18	0.20	0.40
Uganda	81	430	35	22		2	33	22	0.63	12.94
Congo, Dr				2	7	7		2	0.30	0.30
Zambia	121	392	47	48		2	34	60	1.68	
Zimbabwe	197	228	45	25		3	39	28	0.65	9.79
S. Africa	1,466	286	419	244	54	193	252	273	0.61	1.42
Kazakhstan	113	665	75	51	0	13	58	55	0.76	4.14
Kyrgyzstan	14	851	12	4	3	1	13	5	0.33	4.79
Tajikistan	191	535	102	34		15	85	36	0.36	2.43
Turkmenistan	534	561	300	91		141	143	106	0.37	0.75
Uzbekistan	900	712	641	259		630	127	144	0.19	0.23
C. Asia	1,752	645	1,130	439	3	800	427	345	2.01	0.43



2018/19 Supply and Use of Cotton by Country (cont'd) 1 August 2020

	Area	Yield	Prod	Beg Stocks	Imports	Cons	Exports	End Stocks	S/U *	S/MU **
	000 Ha	Kgs/Ha			000 Metric Tonnes				Ratio	Ratio
Austria				1	3	3		1	0.18	0.18
Azerbaijan	143	672	96	34		20	66	44	0.50	2.13
Belarus				4	11	11		4	0.34	0.34
Belgium				1	7	3	4	1	0.19	0.43
Bulgaria	1	324	0.28	1	6	6	0.08	1	0.17	0.17
Czech Rep.				0.22	2	2		0.10	0.04	0.04
Denmark					0.01	0.01			0.12	
Estonia										
Finland										
France				2	9	8	1	1	0.14	0.17
Germany				9	19	16	3	9	0.49	0.57
Greece	277	1,083	300	38	7	16	298	31	0.10	1.89
Hungary				0.02				0		
Ireland				0.02	0.16	0.16		0	0.11	0.11
Italy				8	34	32	2	8	0.22	0.23
Latvia				0.01	0.26	0.20	0.06	0	0.03	0.04
Lithuania				0.10				0		
Moldova				1	2	2		1	0.34	0.34
Netherlands				0.45	4	4		0	0.11	
Norway										
Poland				1	2	2	0.29	1	0.60	0.63
Portugal				7	38	38	1	7	0.19	0.19
Romania				0.04	0.34	0.34		0	0.10	0.10
Russia	0.02	1,750	0.04	6	22	22	0.04	6	0.28	0.28
Slovak Rep.										
Spain	65	1,092	71	38	3	3	52	40	0.56	11.94
Sweden				0.01	0.01	0.01		0		
Switzerland				0.16	1	0.48	0.35	0	0.19	0.33
Ukraine				0.44	2	2		0	0.26	0.26
United Kingdom				0.03	0.25	0.25		0	0.12	0.12
Former Yugoslavia				1	7	7		1	0.19	0.19
Europe	486	962	467	154	179	199	427	158	0.25	0.79
Including EU-27	343	1,083	371	108	136	136	301	102	0.23	0.75
China	3,367	1,794	6,040	9,033	2,100	8,250	30	8,885	1.07	1.08
Hong Kong				30	0.47	0.41	0.06	30	51.93	
Australia	343	1,414	485	452		6	791	140	0.18	23.14
Indonesia	6	618	3	70	685	700		59	0.08	0.08
Japan				8	50	51		7	0.14	0.14
Korea, D.R.				1	5	5		1	0.24	0.24
Korea, Rep.				40	170	171	1	38	0.22	0.22
Malaysia				13	162	94	68	13	0.08	0.14
Philippines	0.01	570	0.01	5	13	13		5	0.35	0.35
Singapore				0	6		6	0	0.05	
Taiwan				21	138	138		21	0.15	0.15
Thailand	2	520	1	56	234	236		56	0.24	0.24
Vietnam	0.30	667	0.20	196	1,510	1,506		200	0.13	0.13
E. Asia	351	1,395	490	861	2,974	2,921	867	538	0.14	0.18
Afghanistan	36	387	14	5		4	11	4	0.25	0.90
Bangladesh	45	768	35	422	1,544	1,579		422	0.27	0.27
India	12,600	425	5,350	1,989	392	5,400	765	1,567	0.25	0.29
Myanmar	239	634	152	69	56	207	0	69	0.33	0.34
Pakistan	2,325	718	1,670	819	638	2,358	16	754	0.32	0.32
Sri Lanka				0	2	2		0	0.12	0.12
S. Asia	15,248	474	7,222	3,306	2,632	9,552	1,180	2,817	0.27	0.29
Iran	71	710	50	52	71	116		58	0.50	0.50
Iraq	9	362	3	2	5	8		2	0.24	0.24
Israel	4	2,009	9	2			8	2	0.27	
Syria	18	958	18	9		14	4	9	0.49	0.61
Turkey	518	1,885	977	918	762	1,555	105	997	0.60	0.64
Sub Total	624	1,696	1,058	987	855	1,712	117	1,071	0.59	0.63
World Total	32,994	779	25,718	18,816	9,271	26,009	9,038	18,758	0.72	0.72

* / Ending stocks divided by consumption plus exports.

Subtotals and total include countries not shown.

** / Ending stocks divided by consumption.



2019/20 Supply and Use of Cotton by Country 1 August 2020

	Area	Yield	Prod	Beg Stocks	Imports	Cons	Exports	End Stocks	S/U *	S/MU **
	000 Ha	Kgs/Ha	000 Metric Tonnes							Ratio
Canada				0.04	0.31	0.31		0.04	0.13	0.13
Cuba	4	269	1	1	2	3		1	0.19	0.19
Dom. Rep.					1	1		0	0.47	0.47
Mexico	224	1,644	369	226	127	396	100	226	0.45	0.57
USA	4,700	923	4,336	1,078	1	537	3,309	1,569	0.41	2.92
N. America	4,933	954	4,707	1,305	132	939	3,409	1,796	0.41	1.91
El Salvador				9	35	35		9	0.24	0.24
Guatemala				7	27	27		6	0.23	0.23
Honduras	0.10	318	0.03	0.23		0.00		0.27		
C. America	1	522	0.50	16	61	63		15	0.24	0.24
Argentina	455	736	335	320	1	134	94	428	1.88	3.19
Bolivia	4	641	3	2	1	3	0.2	2	0.50	0.53
Brazil	1,668	1,733	2,891	2,340	3	650	1,901	2,684	1.05	4.13
Chile				0	0	0		0	0.41	0.41
Colombia	21	847	17	4	19	36		4	0.11	0.11
Ecuador	1	439	1	3	10	11		3	0.31	0.31
Paraguay	10	420	4	3	1	2	4	2	0.34	0.98
Peru	24	819	20	46	40	59	1	46	0.78	0.79
Uruguay				0.001	0.01	0.01		0.001	0.06	0.06
Venezuela	14	392	6	3	5	10		3	0.30	0.30
S. America	2,198	1,491	3,276	2,722	80	905	1,999	3,173	1.09	3.50
Algeria				0.06	1	1		0.06	0.07	0.07
Egypt	102	657	67	98	83	102	48	98	0.66	0.97
Morocco				3	7	7		3	0.40	0.40
Sudan	180	722	130	16		18	79	49	0.50	2.72
Tunisia				3	12	12		3	0.22	0.22
N. Africa	282	699	197	120	103	140	127	153	0.57	1.09
Benin	666	467	311	147		1	263	194	0.74	202.35
Burkina Faso	579	333	193	116		3	174	132	0.74	43.90
Cameroon	250	559	140	66		2	106	98	0.91	51.75
Cent. Afr. Rep.	34	252	9	4			9	4	0.44	
Chad	248	298	74	6		0.20	60	20	0.33	100.61
Cote d'Ivoire	408	516	211	61		2	145	125	0.85	61.22
Guinea	12	287	4	2			4	2	0.44	
Madagascar				3				3		
Mali	738	404	299	40		2	262	74	0.28	37.16
Niger	5	470	2	0.24		1	1	0	0.11	0.25
Senegal	16	408	6	1		1	6	1	0.14	1.16
Togo	181	265	48	28			49	27	0.55	
F. Africa	3,137	413	1,295	475		12	1,078	680	0.62	57.48
Angola	3	308	1	0.29		1	0.28	0.29	0.33	0.48
Ethiopia	82	741	60	22	3	54	7	24	0.40	0.45
Ghana	15	375	6	12		1	4	12	2.14	9.24
Kenya	25	220	6	1	1	4	0	4	0.87	0.88
Malawi	85	249	21	12		3	14	16	0.98	5.44
Mozambique	135	165	22	15		1	18	18	0.92	
Nigeria	250	205	51	17	1	28	25	17	0.33	0.63
South Africa	28	1,017	29	51	14	19	22	54	1.33	2.84
Tanzania	441	247	109	18		45	41	40	0.47	0.90
Uganda	89	416	37	22		4	23	32	1.18	8.65
Congo, Dr				2	7	7		2	0.30	0.30
Zambia	118	393	46	60		2	30	74	2.29	
Zimbabwe	174	340	59	28		3	33	51	1.46	18.30
S. Africa	1,466	308	451	273	52	199	219	359	0.86	1.80
Kazakhstan	117	669	78	55	0.05	13	58	61	0.86	4.56
Kyrgyzstan	14	855	12	5	3	1	13	5	0.36	5.41
Tajikistan	196	538	106	36		15	82	45	0.47	3.04
Turkmenistan	545	564	307	106		141	149	123	0.42	0.87
Uzbekistan	900	712	641	144		578	64	144	0.22	0.25
C. Asia	1,772	646	1,144	345	3	748	366	378	2.33	0.51



2019/20 Supply and Use of Cotton by Country (cont'd) 1 August 2020

	Area	Yield	Prod	Beg Stocks	Imports	Cons	Exports	End Stocks	S/U *	S/MU **
	000 Ha	Kgs/Ha			000 Metric Tonnes				Ratio	Ratio
Austria				1	3	3		1	0.19	0.19
Azerbaijan	146	677	99	44		29	63	51	0.55	1.73
Belarus				4	11	11		4	0.34	0.34
Belgium				1	7	3	4	1	0.19	0.44
Bulgaria	1	324	0.26	1	6	6	0.08	1	0.17	0.17
Czech Rep.				0.10	2	2		0.14	0.07	0.07
Denmark										
Estonia										
Finland										
France				1	8	8	1	1	0.11	0.12
Germany				9	16	15	3	8	0.43	0.51
Greece	277	1,264	350	31	7	16	320	51	0.15	3.18
Hungary				0.02				0		
Ireland				0.02	0.15	0.15		0	0.12	0.12
Italy				8	32	31	1	8	0.23	0.24
Latvia				0.01	0.26	0.20	0.06	0	0.03	0.04
Lithuania				0.10				0		
Moldova				1	2	2		1	0.34	0.34
Netherlands				0.45	4	4		0	0.11	
Norway										
Poland				1	2	2	0.29	1	0.59	0.65
Portugal				7	36	36	1	7	0.20	0.20
Romania				0.04	0.33	0.33		0	0.11	0.11
Russia	0.02	1,759	0.04	6	22	22	0	6	0.27	0.27
Slovak Rep.										
Spain	66	1,061	70	40	3	3	52	45	0.66	13.83
Sweden				0.01	0.01	0.01		0.01		
Switzerland				0.16	1	0.46	0.35	0.16	0.19	0.34
Ukraine				0.44	2	2		0.44	0.27	0.27
United Kingdom				0.03	0.25	0.25		0.03	0.11	0.11
Former Yugoslavia				1	7	7		1	0.19	0.19
Europe	490	1,060	519	158	172	203	445	188	0.29	0.93
Including EU-27	344	1,222	420	102	129	131	301	125	0.29	0.96
China	3,300	1,758	5,800	8,885	1,815	7,250	30	9,199	1.26	1.27
Hong Kong				30	0.23	0.39	0.06	30	53.01	
Australia	61	2,231	135	140		6	235	34	0.14	5.93
Indonesia	5	621	3	59	630	630		62	0.10	0.10
Japan				7	48	48		7	0.14	0.14
Korea, D.R.				1	5	5		1	0.24	0.24
Korea, Rep.				38	136	136		38	0.28	0.28
Malaysia				13	162	101	61	13	0.08	0.13
Philippines	0.01	573	0.01	5	14	14		5	0.34	0.34
Singapore				0.33	6		6	0	0.05	
Taiwan				21	104	104		21	0.20	0.20
Thailand	2	522	1	56	211	212		56	0.26	0.26
Vietnam	0.30	667	0.20	200	1,401	1,401		200	0.14	0.14
E. Asia	68	2,047	140	538	2,717	2,656	302	436	0.15	0.16
Afghanistan	36	387	14	4		4	11	3	0.19	0.68
Bangladesh	46	772	35	422	1,216	1,216		458	0.38	0.38
India	13,300	466	6,200	1,567	470	4,590	528	3,119	0.61	0.68
Myanmar	239	634	152	69	24	187		59	0.31	0.31
Pakistan	2,432	543	1,320	754	823	2,204	10	682	0.31	0.31
Sri Lanka				0.20	2	2		0	0.11	0.11
S. Asia	16,056	481	7,723	2,817	2,535	8,205	1,180	4,321	0.49	0.53
Iran	71	711	50	58	54	104		58	0.56	0.56
Iraq	9	362	3	2	5	8		2	0.24	0.24
Israel	4	1,851	8	2			8	2	0.28	
Syria	18	968	17	9		14	3	9	0.51	0.63
Turkey	478	1,705	815	997	900	1,477	80	1,155	0.74	0.78
Sub Total	583	1,536	895	1,071	977	1,622	92	1,229	0.72	0.76
World Total	34,303	762	26,154	18,758	8,649	22,952	8,649	21,960	0.96	0.96

* / Ending stocks divided by consumption plus exports.

Subtotals and total include countries not shown.

** / Ending stocks divided by consumption.



2020/21 Supply and Use of Cotton by Country 1 August 2020

	Area	Yield	Prod	Beg Stocks	Imports	Cons	Exports	End Stocks	S/U *	S/MU **
	000 Ha	Kgs/Ha	000 Metric Tonnes							Ratio
Canada				0.04	0.28	0.28		0.04	0.13	0.13
Cuba	4	271	1	1	2	3		1	0.19	0.19
Dom. Rep.					1	1		0.46	0.47	0.47
Mexico	145	1,562	227	226	227	396	108	176	0.35	0.44
USA	4,146	919	3,810	1,569	1	611	3,266	1,503	0.39	2.46
N. America	4,302	939	4,039	1,796	232	1,013	3,374	1,681	0.38	1.66
El Salvador				9	35	35		9	0.24	0.24
Guatemala				6	27	27		6	0.21	0.21
Honduras	0.10	318	0.03	0.27	0.00	0.00		0		
C. America	1	515	0.38	15	62	63	0.02	15	0.24	0.24
Argentina	360	657	237	428	1	135	102	428	1.81	3.18
Bolivia	4	641	3	2	1	3	0	2	0.50	0.53
Brazil	1,426	1,717	2,450	2,684	3	650	1,481	3,006	1.41	4.63
Chile				0.02	0.05	0.05		0.02	0.41	0.41
Colombia	18	847	16	4	20	36		4	0.11	0.11
Ecuador	1	440	1	3	10	11		3	0.31	0.31
Paraguay	10	420	4	2		1	3	2	0.54	1.95
Peru	23	819	19	46	40	59	1	46	0.78	0.79
Uruguay				0.00	0.01	0.01		0	0.06	0.06
Venezuela	14	392	6	3	5	10		3	0.31	0.31
S. America	1,858	1,472	2,734	3,173	80	905	1,588	3,495	1.40	3.86
Algeria				0	1	1		0.06	0.07	0.07
Egypt	102	660	67	98	76	100	44	98	0.69	0.99
Morocco				3	7	7		3	0.41	0.41
Sudan	180	722	130	49		18	104	57	0.46	3.15
Tunisia				3	12	12		3	0.22	0.22
N. Africa	282	700	197	153	96	138	148	161	0.56	1.17
Benin	666	467	311	194		1	269	235	0.87	244.61
Burkina Faso	579	333	193	132		3	173	149	0.85	49.57
Cameroon	250	559	140	98		2	148	88	0.59	46.23
Cent. Afr. Rep.	34	252	9	4			9	4	0.45	
Chad	252	298	75	20		0.20	61	34	0.55	168.02
Cote d'Ivoire	408	532	217	125		2	222	118	0.52	57.72
Guinea	13	287	4	2			4	2	0.45	
Madagascar				3				3		
Mali	738	404	299	74		2	291	80	0.27	39.86
Niger	5	470	2	0.24		1	1	0	0.11	0.25
Senegal	16	410	6	0.91		1	4	3	0.65	3.74
Togo	181	265	48	27			45	30	0.65	
F. Africa	3,141	415	1,303	680		12	1,228	744	0.60	62.84
Angola	3	308	1	0		1	0.26	0.29	0.34	0.48
Ethiopia	82	741	61	24	3	55	7	27	0.43	0.49
Ghana	15	375	6	12	1	1	6	12	1.75	9.24
Kenya	25	220	6	4	1	8		3	0.32	0.32
Malawi	84	249	21	16		3	23	12	0.45	3.87
Mozambique	134	166	22	18		1	27	11	0.40	8.81
Nigeria	258	205	53	17	1	28	26	17	0.32	0.63
South Africa	28	1,154	32	54	14	19	22	60	1.47	3.15
Tanzania	437	247	108	40		45	41	62	0.72	1.38
Uganda	101	426	43	32		4	39	32	0.74	7.44
Congo, Dr				2	7	7		2	0.30	0.30
Zambia	117	393	46	74		2	32	86	2.52	47.73
Zimbabwe	172	340	59	51		3	47	60	1.20	21.34
S. Africa	1,476	312	461	359	54	204	271	398	0.84	1.95
Kazakhstan	119	669	80	61	0.05	13	66	61	0.77	4.56
Kyrgyzstan	14	855	12	5	3	1	14	5	0.34	5.41
Tajikistan	196	538	106	45		15	91	45	0.43	3.04
Turkmenistan	556	564	314	123		143	146	148	0.51	1.03
Uzbekistan	900	712	641	144		578	64	144	0.22	0.25
C. Asia	1,786	645	1,152	378	3	750	381	403	2.28	0.54



2020/21 Supply and Use of Cotton by Country (cont'd) 1 August 2020

	Area	Yield	Prod	Beg Stocks	Imports	Cons	Exports	End Stocks	S/U *	S/MU **
	000 Ha	Kgs/Ha			000 Metric Tonnes				Ratio	Ratio
Austria				1	3	3		1	0.20	0.20
Azerbaijan	100	677	68	51		29	38	51	0.75	1.72
Belarus				4	11	11		4	0.34	0.34
Belgium				1	7	3	4	1	0.19	0.46
Bulgaria	1	324	0.26	1	6	6	0.08	1	0.17	0.17
Czech Rep.				0.14	2	2		0	0.07	0.07
Denmark					0.01	0.01				
Estonia										
Finland										
France				1	9	8	1	1	0.11	0.12
Germany				8	17	14	3	8	0.45	0.54
Greece	277	1,173	325	51	7	16	325	42	0.12	2.59
Hungary				0				0		
Ireland				0	0	0		0	0.12	0.12
Italy				8	31	29	1	8	0.24	0.26
Latvia				0.01	0.26	0.20	0.06	0	0.03	0.04
Lithuania				0.10				0		
Moldova				1	2	2		1	0.34	0.34
Netherlands				0.45	4	4		0	0.11	0.11
Norway										
Poland				1	2	2	0.20	1	0.59	0.65
Portugal				7	36	36		7	0.20	0.20
Romania				0.04	0.33	0.33		0	0.11	0.11
Russia	0.02	1,759	0.04	6	22	22	0.04	6	0.26	0.26
Slovak Rep.				0				0		
Spain	66	1,061	70	45	3	3	70	45	0.62	13.83
Sweden				0.01	0.01	0.01		0	0.81	0.81
Switzerland				0.16	1	0.46	0.35	0	0.19	0.34
Ukraine				0.44	2	2		0	0.27	0.27
United Kingdom				0.03	0.25	0.25		0	0.11	0.11
Former Yugoslavia				6	7	7	1	5	0.66	0.76
Europe	444	1,043	463	193	171	201	444	182	0.28	0.91
Including EU-27	344	1,150	395	125	134	133	419	116	0.21	0.87
China	3,211	1,769	5,680	9,199	1,900	7,800	50	8,929	1.14	1.14
Hong Kong				30	0.23	0.39	0.17	30	52.42	75.45
Australia	152	2,375	361	34		6	270	119	0.43	20.75
Indonesia	5	621	3	62	637	640		62	0.10	0.10
Japan				7	50	51		6	0.13	0.13
Korea, D.R.				1	5	5		1	0.15	0.15
Korea, Rep.				38	143	143		38	0.26	0.26
Malaysia				13	202	135	67	13	0.07	0.10
Philippines	0.011	573	0.006	5	14	14		5	0.34	0.34
Singapore				0	6		6	0	0.05	
Taiwan				21	105	105		21	0.20	0.20
Thailand	2	522	1	56	226	217		66	0.30	0.30
Vietnam	0.30	582	0.36	200	1,437	1,436		201	0.14	0.14
E. Asia	159	2,296	365	436	2,825	2,751	344	531	0.17	0.19
Afghanistan	36	387	14	3		4	10	3	0.20	0.68
Bangladesh	46	772	35	458	1,229	1,246		475	0.38	0.38
India	12,635	491	6,200	3,119	470	4,751	1,130	3,908	0.66	0.82
Myanmar	239	634	152	59	25	187		49	0.26	0.26
Pakistan	2,189	543	1,188	682	982	2,160	10	682	0.31	0.32
Sri Lanka				0	2	2		0	0.11	0.11
S. Asia	15,148	501	7,591	4,321	2,708	8,352	1,666	5,117	0.54	0.61
Iran	71	711	50	58	54	104		58	0.56	0.56
Iraq	9	362	3	2	5	8		2	0.24	0.24
Israel	4	1,693	8	2			8	2	0.19	
Syria	25	973	24	9		15	8	9	0.39	0.61
Turkey	400	1,722	689	1,155	859	1,507	76	1,120	0.71	0.74
Sub Total	512	1,515	775	1,229	936	1,653	93	1,193	0.68	0.72
World Total	32,337	766	24,769	21,965	9,070	23,850	9,071	22,884	0.96	0.96

* / Ending stocks divided by consumption plus exports.

Subtotals and total include countries not shown.

** / Ending stocks divided by consumption.